



adept electronic

**adept**  
**electronic solutions**

**The Machine Vision and  
Imaging Specialists**

Perth: +61 (08) 9242 5411

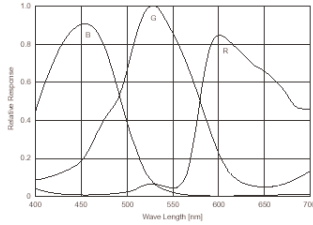
Sydney: +61 (02) 9979 2599

Melbourne: +61 (03) 9555 5621

Email: [adept@adept.net.au](mailto:adept@adept.net.au)

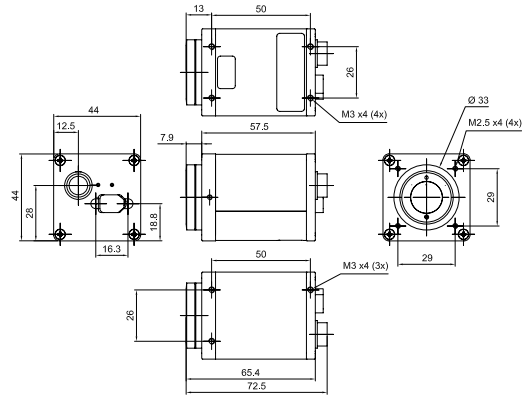
Web: <http://www.adept.net.au>

# AVT Oscar F-320C

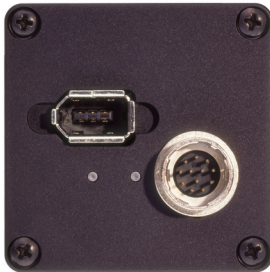


Sensor specifications (extracted from the data sheet of the sensor - excluding lens and filter)

Pin	Signal
1	External GND (RS232 and ext. power)
2	External Power (8...36 V DC)
3	
4	GP Input 1 (Default: Trigger)
5	
6	GP Output 1 (Default: IntEva)
7	GP Input GND
8	RxD (RS-232)
9	TxD (RS-232)
10	GP Output Power
11	GP Input 2 (TTL)
12	GP Output 2



Oscar  
72.5 x 44 x 44 (L x W x H)



Connections

Preview mode (by sub-sampling):	
348 x 256	39.4 fps
<b>AOI:</b>	
2080 x 1540	6.6 fps
1600 x 1200	8.3 fps
1280 x 960	9.6 fps
800 x 600	15.2 fps
640 x 480	18.2 fps

Dimensions

## Camera Specifications

Image device	Type 1/1.8 (diag. 8.93 mm) Sony CCD frame readout (ICX-262AQ)
Effective picture elements	2088 (H) x 1548 (V)
Cell size	3.45 µm x 3.45 µm
Resolution depth	12-bit / up to 16-bit in High SNR mode
Lens mount	C-Mount
Color modes	Mono8; Y8-green, Y8-red, Y8-blue; RAW8/16; RGB8; YUV 4:2:2; YUV 4:1:1
Digital interface	IEEE 1394a; IDC V1.3
Transfer rate	100 Mbit/s, 200 Mbit/s, 400 Mbit/s
Frame rates	Up to 30 fps in Format_0; up to 6.59 fps in Format_7 frame readout; up to 39.3 fps in Format_7 progressive
Image memory (FIFO)	32 MB, optional up to 256 MB
Gain control	Manual, 0 ... 20 dB (0.035 db/step); auto gain (select. AOI)
Shutter speed	20 µs ... ~67 s; auto shutter (select AOI)
External trigger shutter	Trigger_Mode_0, Trigger_Mode_1 (prog. scan, F_7 M_0); advanced feature: trigger_Mode_15 (bulk); image transfer by command; trigger delay
Smart features	Real-time shading correction, color correction, High SNR-mode (image summation); two configurable inputs, two configurable outputs, image mirror (L-R<->R-L), sub-sampling, serial port IIDC V1.31
Power requirements	DC 8 V ... 36 V via IEEE 1394 cable or 12-pin HIROSE
Power consumption	3.6 watt (@12 V DC)
Dimensions	72.5 mm x 44 mm x 44 mm (L x W x H); w/o tripod and lens
Mass	170 g (without lens)
Operating temperature	+5 ... +45 ° Celsius
Storage temperature	-10 ... +60 ° Celsius
Regulations	EN 55022, EN 61000, EN 55024, FCC Class B; DIN ISO 9022, RoHS (2002/95/EC)
Options	Removable IR cut filter, host adapter, locking IEEE 1394 cable, AVT FirePackage/ Direct FirePackage/Fire4Linux