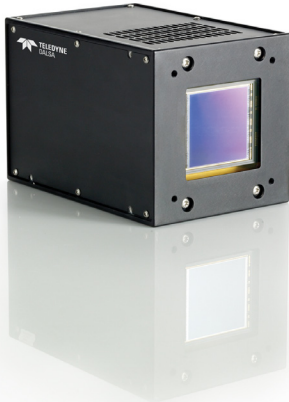


QuantaPro 2K

High Sensitivity Cooled CCD Area Scan Camera



Overview

Our new large format, low light imaging camera is ideal for astronomical and scientific imaging.

Teledyne DALSA's new highly sensitive, small bodied, thermoelectrically cooled, full-frame CCD area camera is designed to excel in low light conditions while employing long integration times.

With a GigE or CameraLink interface for ease-of-use and ease of system integration this camera provides an economical solution by employing a front-illuminated (FI) device with QE approaching that of back illumination (BI). A small back focal distance of less than 9 mm allows use with large optics.

The single output format running at 10 MHz provides competitive frame rates without the difficulties associated with multi-output tap matching. Dark current reaches 0.1 e / pix / sec at -35 °C and a linear 16-bit digitization pushes dynamic range to 10,000 : 1.

Industry Best

- Internal thermoelectrical cooling to -35 °C with anti-fog
- Large 5 cm x 5 cm optical format
- GigE or CameraLink interface
- Single output architecture
- Low readout noise and dark current
- Small 12 x 12 x 17.8 cm form factor

Additional Features

- Binning 2 x 2, 4 x 4, 8 x 8, 16 x 16
- Highly sensitive 24 μm resolution
- Low power consumption
- Single power rail
- External trigger
- Programmable ADC gain

Applications

- Astronomy
- Scientific
- Medical

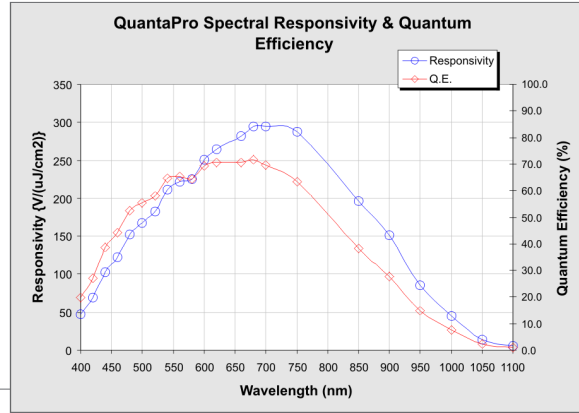
Specifications

Resolution	2084 x 2084 pixels
Data Rate	10 MHz
Frame Rate	2 fps (no binning)
Pixel Size	24 μm x 24 μm
Data Format	16 bit
Output	GigE or CameraLink
QE	Peak QE 70% at 650 nm
Dynamic Range	82 dB, typical
Optical Size	50.2 mm x 50.2 mm
Camera Size	120 mm x 120 mm x 178 mm
Mass	2.5 kg
Operating Temperature	-20 °C to +40 °C
Power Supply	+24 VDC
Power Dissipation	40 W
Exposure Time	1 μs to 3,600,000 μs, programmable
Dark Current	0.1 e / pix / sec (at -35 °C)
Read Noise	10 e, typical
Full Well (output)	180 ke
Imaging Area Flatness	25 μm
Part Number	CP-10-04K02-00-L

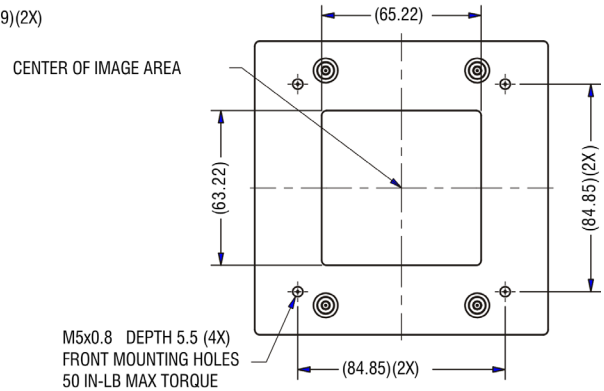
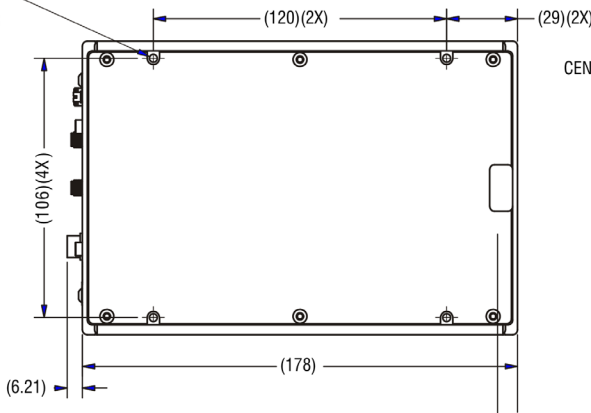
QuantaPro 2K

High Sensitivity Cooled CCD Area Scan Camera

The new QuantaPro 2K camera allows you to take your low light inspection system to the next level.

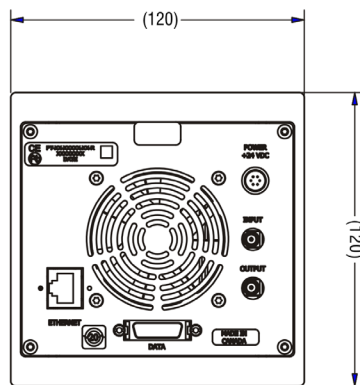


M4x0.7 -THRU (8X)
SIDE MOUNTING HOLES
25 IN-LB MAX TORQUE

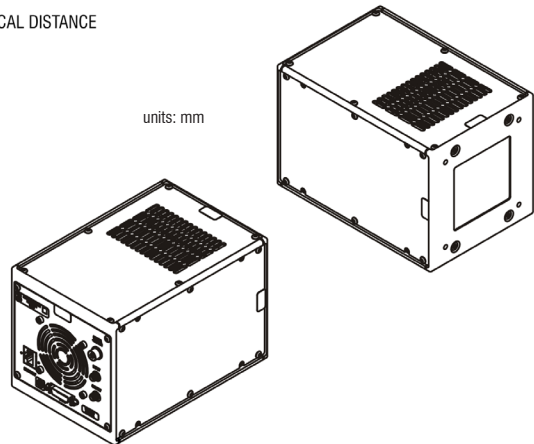


M5x0.8 DEPTH 5.5 (4X)
FRONT MOUNTING HOLES
50 IN-LB MAX TORQUE

(8.9) OPTICAL DISTANCE



units: mm



www.teledynedalsa.com

Americas

Boston, USA
+1 978-670-2000
sales.americas@teledynedalsa.com

Europe

Munich, Germany
+49 8142-46770
sales.europe@teledynedalsa.com

Asia Pacific

Tokyo, Japan
+81 3-5960-6353
sales.asia@teledynedalsa.com

Shanghai, China
+86 21-3368-0027
sales.asia@teledynedalsa.com