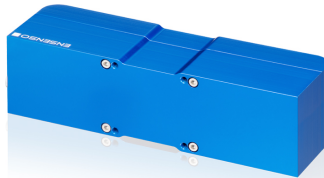


N20-610-16



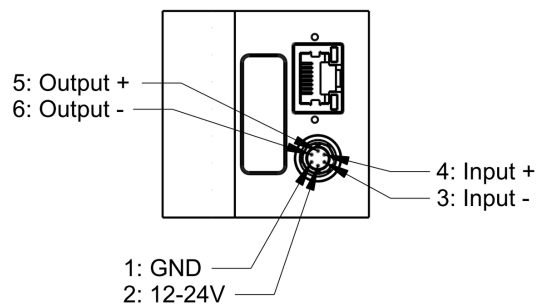
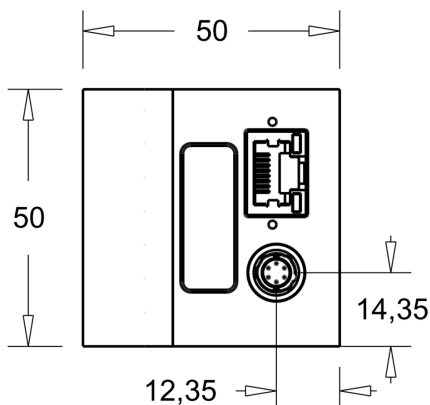
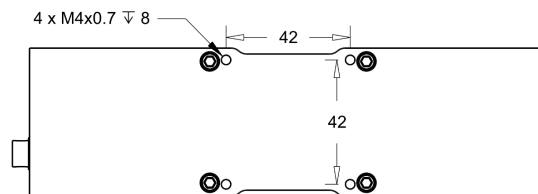
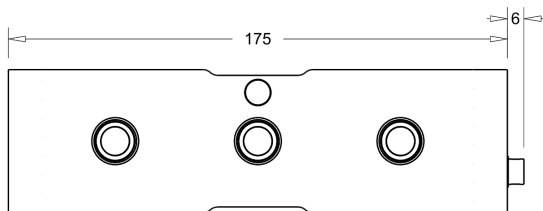
Specification

Technical data

Minimum working distance	180 mm
Maximum working distance	210 mm
Optimum working distance	190 mm
Focal length	6 mm
Mass	550 g
Vergence angle	10.00
Resolution (h x v)	1280 x 1024
Dimensions H/W/L	50.0 mm x 175.0 mm x 50.0 mm
f-number	1.6
Base line	100 mm
Power consumption	9.5 W

Measurement volume

Distance	Z resolution	View field size X	View field size Y	Optics blur	Pixel size
170 mm	0.035 mm	184.28 mm	166.76 mm	2.392 px	0.163 mm
172 mm	0.035 mm	187.62 mm	168.73 mm	2.249 px	0.165 mm
174 mm	0.036 mm	190.96 mm	170.69 mm	2.110 px	0.167 mm
176 mm	0.037 mm	194.31 mm	172.65 mm	1.973 px	0.169 mm
178 mm	0.038 mm	197.65 mm	174.61 mm	1.839 px	0.171 mm
180 mm	0.039 mm	201.00 mm	176.57 mm	1.707 px	0.172 mm
182 mm	0.040 mm	204.34 mm	178.54 mm	1.578 px	0.174 mm
184 mm	0.041 mm	207.69 mm	180.50 mm	1.452 px	0.176 mm
186 mm	0.041 mm	211.03 mm	182.46 mm	1.328 px	0.178 mm
188 mm	0.042 mm	214.38 mm	184.42 mm	1.207 px	0.180 mm
190 mm	0.043 mm	217.72 mm	186.38 mm	1.190 px	0.182 mm
192 mm	0.044 mm	221.06 mm	188.34 mm	1.296 px	0.184 mm
194 mm	0.045 mm	224.41 mm	190.31 mm	1.400 px	0.186 mm
196 mm	0.046 mm	227.75 mm	192.27 mm	1.502 px	0.188 mm
198 mm	0.047 mm	230.87 mm	194.23 mm	1.599 px	0.190 mm
200 mm	0.048 mm	233.21 mm	196.19 mm	1.689 px	0.192 mm
202 mm	0.049 mm	235.54 mm	198.15 mm	1.778 px	0.194 mm
204 mm	0.050 mm	237.87 mm	200.12 mm	1.865 px	0.195 mm
206 mm	0.051 mm	240.20 mm	202.08 mm	1.950 px	0.197 mm
208 mm	0.052 mm	242.53 mm	204.04 mm	2.034 px	0.199 mm
210 mm	0.053 mm	244.87 mm	206.00 mm	2.116 px	0.201 mm



Subject to technical modifications

